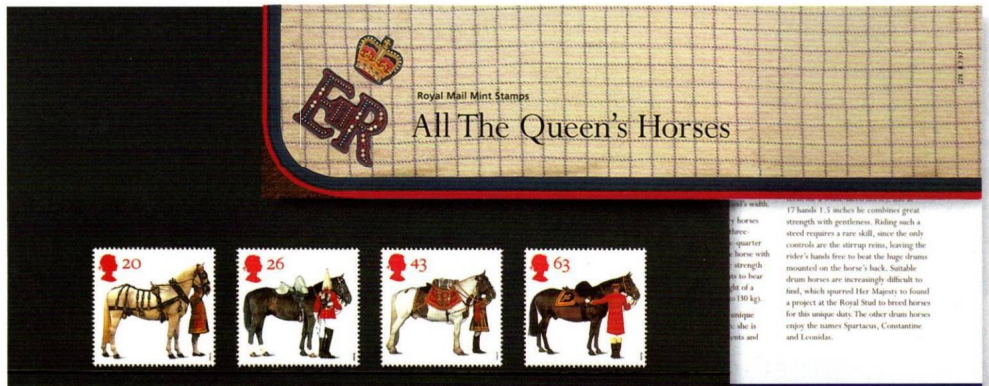


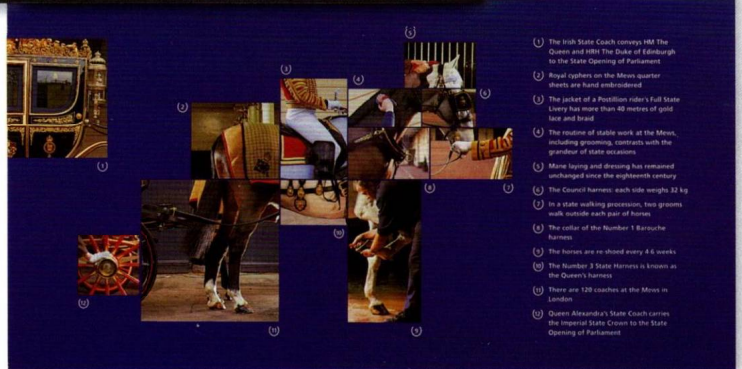
Royal Mail First Day Cover
All The Queen's Horses

Mrs J Robinson
200 Manorbier Road
Ilkeston
Derbyshire
DE7 4AB

The designer The stamps are the work of Jean Luc Benard, best known for his high-profile work in advertising. His exquisite calendar produced for London Zoo has raised much-needed cash for the Zoo and won professional photographic awards. To photograph the horses for the stamps, M Benard worked in studios erected at the Royal Mews and at the Barracks in Hyde Park. Prior to this commission, he photographed horses at a stud run by his sister in Normandy.



Presentation pack and stamp cards A presentation pack (price £1.85) and stamp cards (25p each) will be available from the Bureau, Post Office outlets, and main post offices. The pack has been written by Philippa Kerr.



17 hands 1.5 inches he combines great strength with gentleness. Riding such a steed requires a rare skill, since the only controls are the strap reins, leaving the rider's hands free to beat the huge drums mounted on the horse's back. Suitable drum horses are increasingly difficult to find, which spurred Her Majesty to found a project at the Royal Stud to breed horses for this unique job. The other drum horses enjoy the names Spartacus, Constantine and Leonidas.

- 1 The Irish State Coach conveys HM The Queen and HRH The Duke of Edinburgh to the State Opening of Parliament
- 2 Royal coaches on the Mares quarter seats are hand-embroidered
- 3 The jacket of a Position rider's Full State Livery has more than 42 metres of gold lace and braid
- 4 The routine of stable work at the Mews, including grooming, contracts with the grooms of state occasions
- 5 Mares laying and dressing has remained unchanged since the eighteenth century
- 6 The Council harness: each side weighs 22 kg
- 7 In a state working procession, two grooms walk outside each pair of horses
- 8 The collar of the Number 1 Barouche harness
- 9 The harness are re-shod every 4.8 weeks
- 10 The Number 3 State Harness is known as the Queen's harness
- 11 There are 128 coaches at the Mews in London
- 12 Queen Alexandra's State Coach carries the Imperial State Crown to the State Opening of Parliament

Royal Mail news All the Queen's Horses • Country stamps and high values changes • Hong Kong PNC • Scottish aerogramme

All The Queen's Horses Stamps featuring four of HM The Queen's horses, used for ceremonial duties, go on sale at post offices and philatelic outlets on 8 July 1997. The issue commemorates the 50th anniversary of the British Horse Society.

The **20p** stamp (inland 2nd class basic rate) features St Patrick – an imposing Irish Grey, standing 17 hands 1 inch, described as having 'deep, intelligent eyes and a graceful white waterfall of a tail.' He was acquired by the Royal Mews at age four and after a year's training was in regular use in London. St Patrick, who wears Number 3 State Harness ordered by King William IV in 1836, is used with three other horses, to pull the Irish State Coach for the State Opening of Parliament.

The **26p** denomination (inland 1st class and EU basic rates) depicts seven year old Thompson, a Household Cavalry black horse. He stands at 16½ hands. Most Household Cavalry horses are bred in Ireland to produce large horses with steady temperament and strength in legs and joints – essential for pounding the city streets. The monarch is Colonel-in-Chief of the regiments of the Household Cavalry whose mounted squadrons escort her on state occasions. Their horses are normally acquired at the age of four and trained at Windsor and then at Hyde Park. The horses' names indicate the year they were brought into training, 'T' referring to 1994.

Janus, who features on the **43p** stamp (basic airmail letter rate), is a one tonne 13-year old drum horse with the Blues and Royals, one of the two senior regiments of the Household Cavalry. He measures 17 hands 1½ inches and is described as a 'stately, deeply-impressive pinto skewbald' (bald referring to a white-faced horse). Drum horses are difficult to find, so the Royal Stud breeds horses for this special duty. Other drum horses are called Spartacus, Constantine, and Leonidas. A Blues and Royals drum horse features on the final stamp in the 1989 Lord Mayor's Show se-ten-ant strip; the Blues and Royals escort features on the second stamp.

The **63p** value (airmail letters, second weight step) features River Star who is 20 years old this year (equivalent to 80 human years). At 16 hands 2 inches, he is a fine middle-weight hunter, often used to pull the carriages bearing ambassadors to present their credentials to The Queen. He is ridden by The Duke of Edinburgh at the Trooping the Colour ceremony each June. The Queen at Trooping the Colour featured on the penultimate stamp in the 1992 Happy & Glorious se-ten-ant strip, and the fourth photograph on the 1986 60th birthday stamps shows Her Majesty on Buckingham Palace balcony after the Trooping the Colour ceremony in 1958.

HORSES ON STAMPS Horses, real and in artistic representation, have featured on numerous British stamps: 1929 Postal Union Congress £1; 1951



As one of the finest working stables in existence, the Royal Mews at Buckingham Palace provides a unique opportunity for visitors to see a working department of the Royal Household. The Monarch's magnificent gilded state carriages and coaches, including the unique Gold State Coach are housed here, together with their horses and state liveries.

The Mews is open Tuesday to Thursday (12 noon-16.00) until 3 August, Monday to Thursday (10.30-16.30) 4 August-2 October and Wednesday (12 noon-16.00) 3 October-31 December. Last admission is 30 minutes before closing time.

Enquiries: 0171 839 1377 (09.30-17.30).



10s definitive, 1960 General Letter Office 3d; 1966 Battle of Hastings; 1967 Paintings 9d; 1968 Paintings 15gd and Christmas 4d (rocking horse); 1991 Anniversaries 7½p and Christmas 7½p; 1974 Great Britons; 1976 Caxton 8½p; 1978 Horses; 1979 Horseracing Paintings, Police 13p, and Christmas 8p; 1980 Liverpool & Manchester Railway 12p (4th stamp); 1981 Folklore 18p (Morris dancing); 1983 Fairs 16p & 31p; 1984 Mail Coaches; 1985 Arthurian Legends 31p; 1986 Domesday Book 31p; 1989 Lord Mayor's Show; 1992 Civil War 39p; and 1993 Inland Waterways 33p. Seahorses featured on the popular George v high values. *I am sure sharp-eyed readers will find other horses on our stamps* ED.

Technical details

Printers Walsall Security Printers Ltd

Process Offset lithography

Size 37 × 35mm

Sheets 100

Perforation 14 × 15

Phosphor One band 20p ● two bands others

Paper OBA (Optical Brightening Agent) free

Gum PVA

Plate numbers and colours

W1 (scarlet-vermilion) ●
W1 (black) ● W1 (magenta) ●
W1 (new blue) ● W1 (greenish yellow) – all values

FIRST DAY FACILITIES Unstamped Royal Mail first day cover envelopes will be available from main post offices, the British Philatelic Bureau and Post Office Counters philatelic outlets around a week before 8 July, price 25p.

The Bureau will provide a first day cover service – collectors may order the Royal Mail cover bearing the stamps, cancelled with a pictorial 'first day of issue' postmark of the Bureau or Windsor, price £2.20 (including VAT) to UK addresses, £1.88 overseas (no VAT). Orders for covers must be received at the Bureau by 10 June. Collectors may send stamped covers, on the day of issue, to: British Philatelic Bureau, 20 Brandon Street, Edinburgh EH3 5TT, or Special Handstamp Centre, Royal Mail, Wexham Road, Slough SL1 1AA (for Windsor postmark). The outer envelope should be marked 'FD9711' (Bureau), or 'FD9712' (Windsor).

First Day Posting Boxes will be provided at most main post offices for collectors to post covers to receive local (mostly non-pictorial) 'first day of issue' handstamps. Details of sponsored special handstamps will be announced in the *British Postmark Bulletin* – available on subscription from the Bureau (£10 UK/Europe; £21.75 rest of the world).

As the set includes a second class rate stamp, collectors may submit covers bearing just the 20p stamp for all first day, philatelic and sponsored handstamps in use on 8 July ●